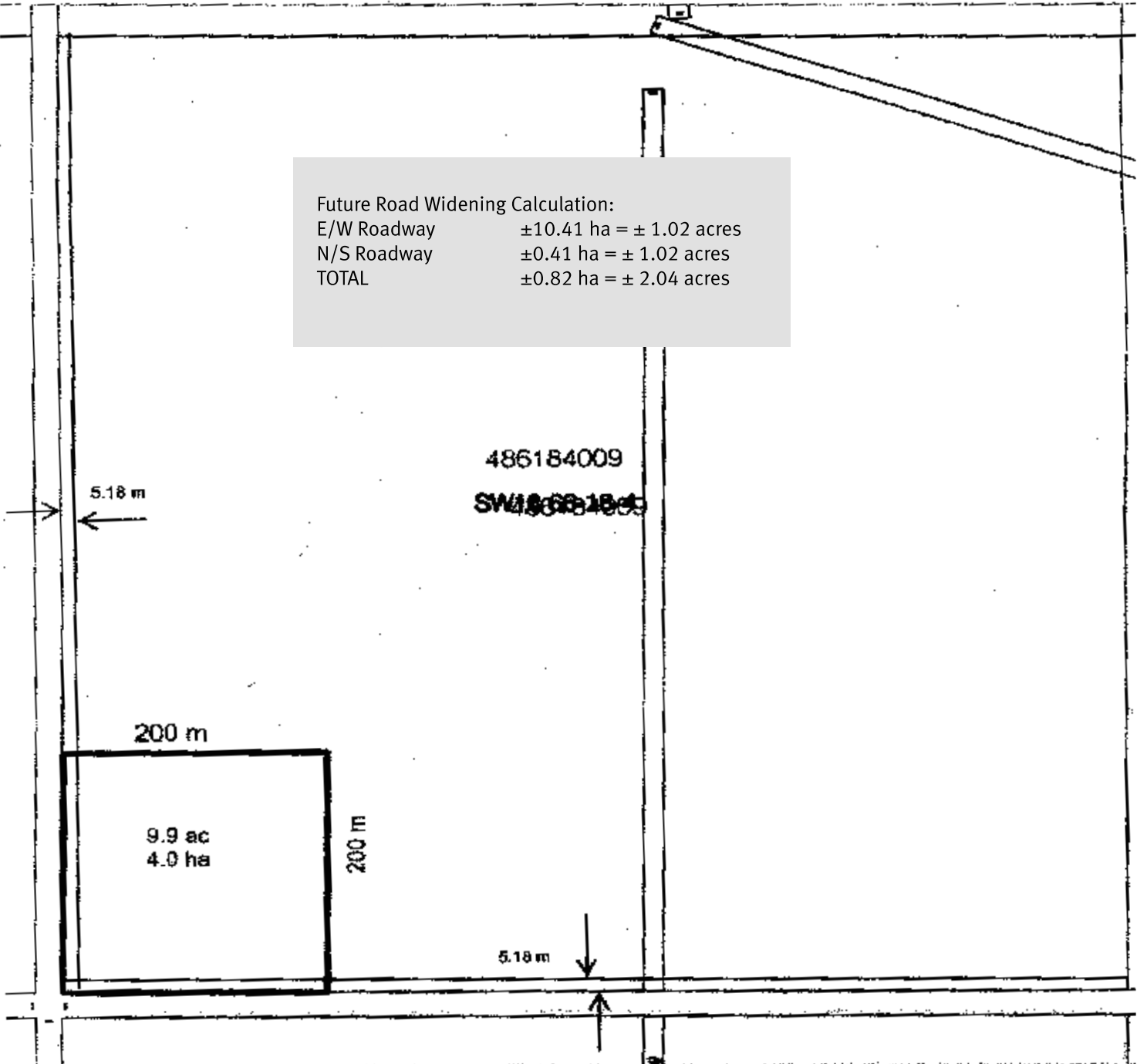


Future Road Widening Calculation:
E/W Roadway ±10.41 ha = ± 1.02 acres
N/S Roadway ±0.41 ha = ± 1.02 acres
TOTAL ±0.82 ha = ± 2.04 acres



CONDITIONALLY APPROVED - MAY 21, 2008

Elaine G. Leew
ELAINE G. LEEUW
DEVELOPMENT OFFICER