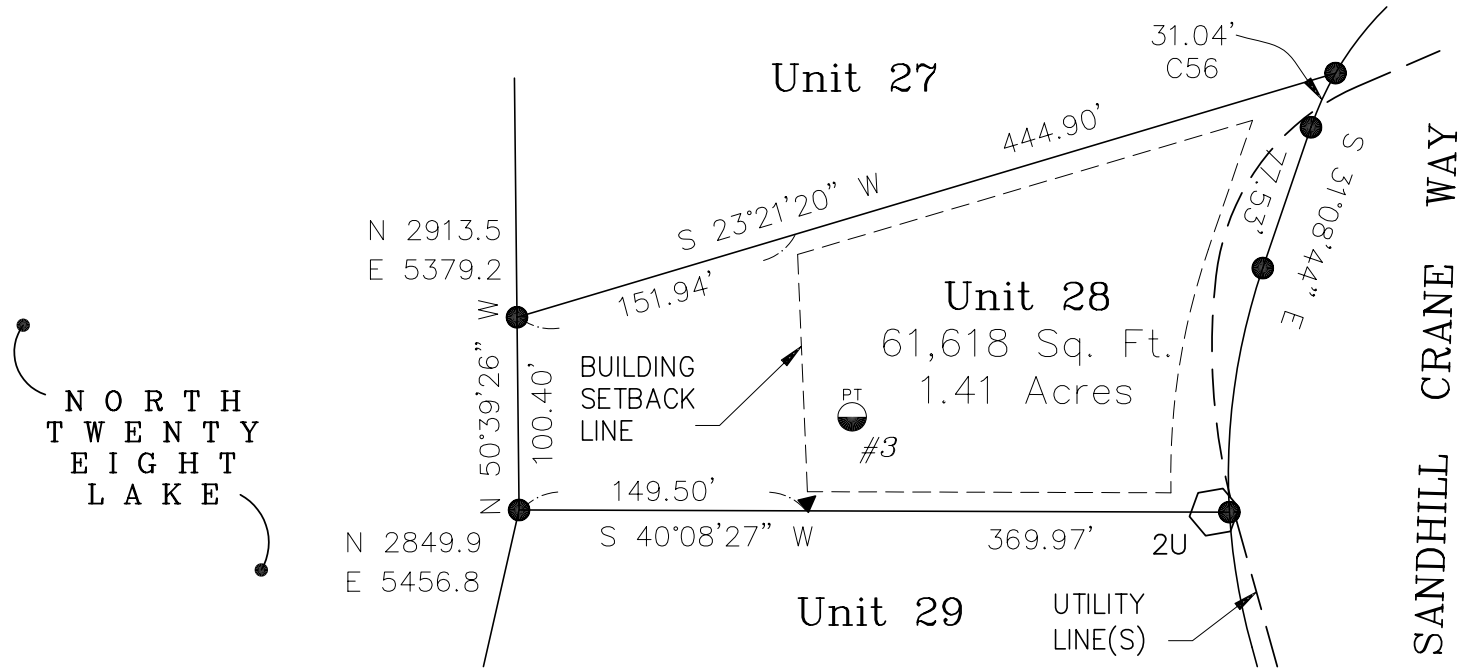
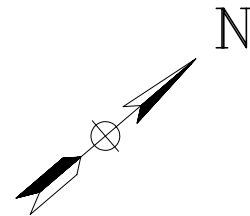


Thoughts for my new home



NORTH
TWENTY
EIGHT
LAKE



GRAPHIC SCALE



(IN FEET)

Legend

- MINOR BOUNDARY MONUMENT (1/2" Iron Rod)
- ⬡ UTILITY RISER REF.
- PT TEST HOLE NUMBER
- ▲ SET SPIKE



M-66, 30 miles east of Traverse City, 5 miles South of Kalkaska
 In Sections 20, 21 & 28, Town 26 North, Range 7 West
 Orange Township, Kalkaska County, Michigan
 Phone (231) 331-4227
www.greatlakesland.com/blueheron.html